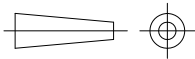


THIS INFORMATION IS CONFIDENTIAL AND IS DISCLOSED TO YOU ON CONDITION THAT NO FURTHER DISCLOSURE IS MADE BY YOU TO OTHER THAN TOP-LINK PERSONNEL WITHOUT WRITTEN AUTHORIZATION FROM TOP-LINK LTD.



DWG NO. C-100471

LDC	-
DIST	-

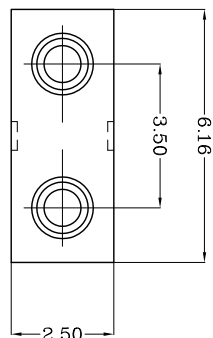
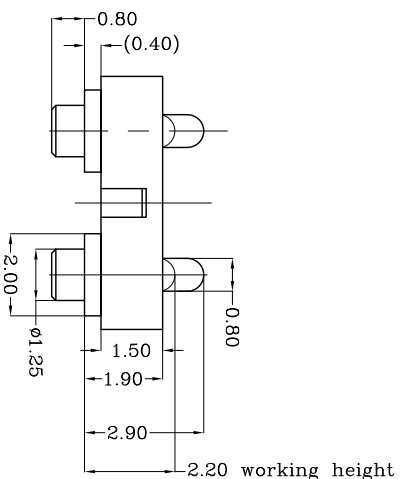
4

3

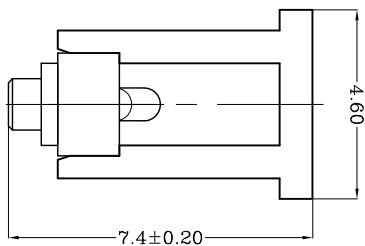
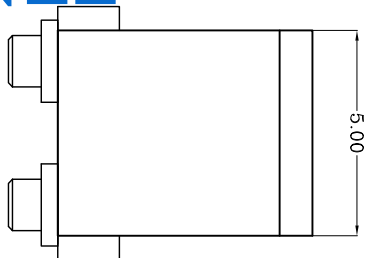
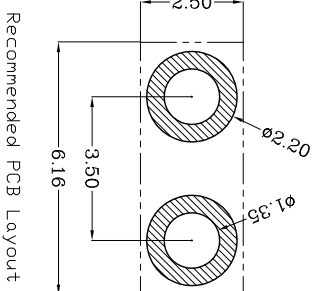
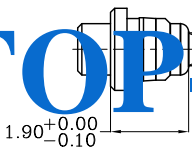
2

1

Notes:  
 1 Material, Housing: PA 4,6 (30% Glass Filled)  
 Contact: Brass  
 Color: Black  
 2 Mechanical demands:  
 Plating Plunger: Min. 0.4um Au over 14um Ni  
 Plating Body: Min 0.1um Au over 14um Ni  
 Spring Force: 108±22 gf.



**TOP-LINK**



USED DN -

DIMENSIONS IN MM  
 TOLERANCES UNLESS  
 OTHER SPECIFIED

0	= ±
0.0	= ±0.15
0.00	= ±0.10
0.000	= ±

ANGLE: ±1°  
 SURF TEXTURE: 32/  
 REMOVE BURRS, BREAK  
 SHARP EDGES R0.05 MAX  
 DD NOT SCALE PRINT

MATL	1	HT TR	-	FIN	-
DWN	Qin	APVD	Lansing	PART NUMBER	
CHK	Jim	REL	<b>Top-Link Electronics</b>	100471-2	
NAME	BATTERY POGO CONNECTOR 2 POSITIONS		Top-Link Electronics Ltd.		
SCALE	1:1	DWG ND.	C-100471	SHEET	1 OF 1
SCALE	A4	DWG ND.	PGC-15-29-R-2P-35PH	REV	A

PART NUMBER  
100471-2

A

B

C

D