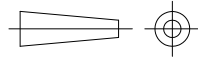


THIS INFORMATION IS CONFIDENTIAL AND IS DISCLOSED TO YOU ON CONDITION THAT NO FURTHER DISCLOSURE IS MADE BY YOU TO OTHER THAN TOP-LINK PERSONNEL WITHOUT WRITTEN AUTHORIZATION FROM TOP-LINK LTD.



DWG NO. C-100417

LDC	-
DIST	-

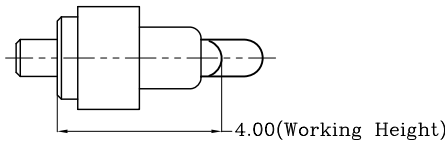
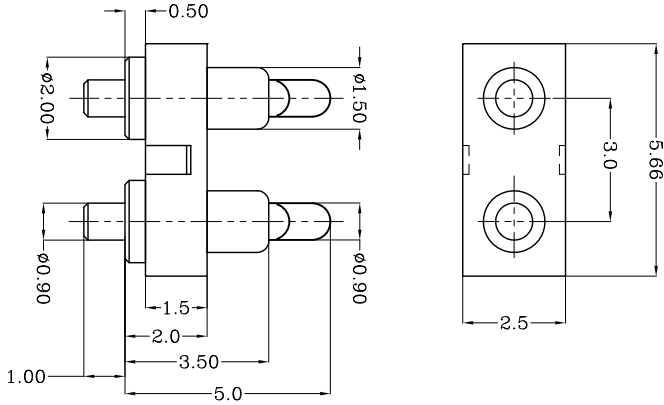
4

3

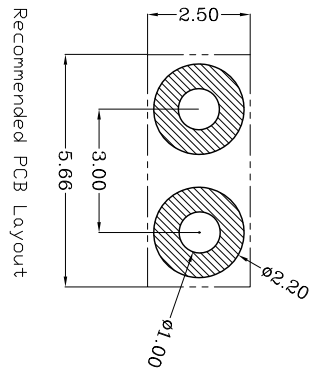
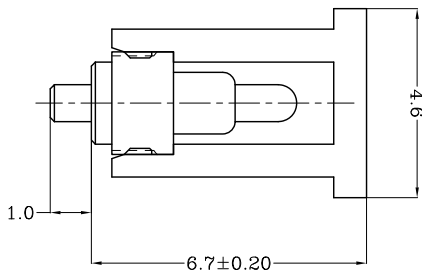
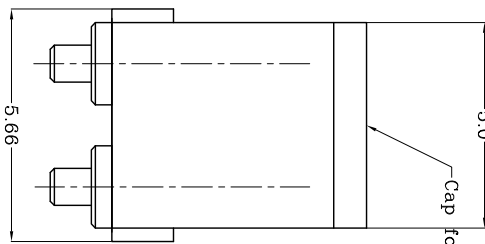
2

1

Notes:
 1 Material, Housing: PA 4,6 (30% Glass Filled)
 Color: Black.
 Contact: Brass
 2 Mechanical demands:
 Spring force: Min 0.2N with 0.5mm stroke
 1.35 +/-0.25N with 1.0mm stroke.
 Full stroke: 12mm
 Plating Plunger: Min 0.4um Au over 1.4um Ni
 Plating Body: Min 0.1um Au over 1.4um Ni



TOP-LINK



DIMENSIONS IN MM
 TOLERANCES UNLESS
 OTHER SPECIFIED
 0 = ±
 0.0 = ±0.15
 0.00 = ±0.10
 0.000 = ±
 ANGLE: ±1°
 SURF TEXTURE: 3.2/
 REMOVE BURRS, BREAK
 SHARP EDGES R0.05 MAX
 DD NOT SCALE PRINT

MATL	1	HT TR	FIN	PART NUMBER
DWN	Qin	APVD	lanxing	100417-2
CHK	Jim	REL	Top-Link Electronics Ltd.	
NAME	BATTERY POGD CONNECTOR 2 POSITIONS Pgc-1.5-5.0-R-2P-3.0PH			
SCALE	1:1	DWG ND.	C-100417	SHEET 1 OF 1
SCALE	A4	DWG ND.	C-100417	REV A

USED DN -

A

B

C

D