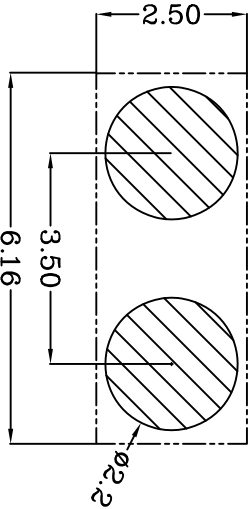
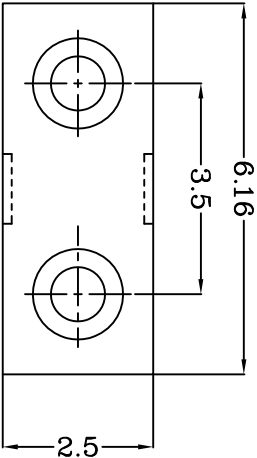
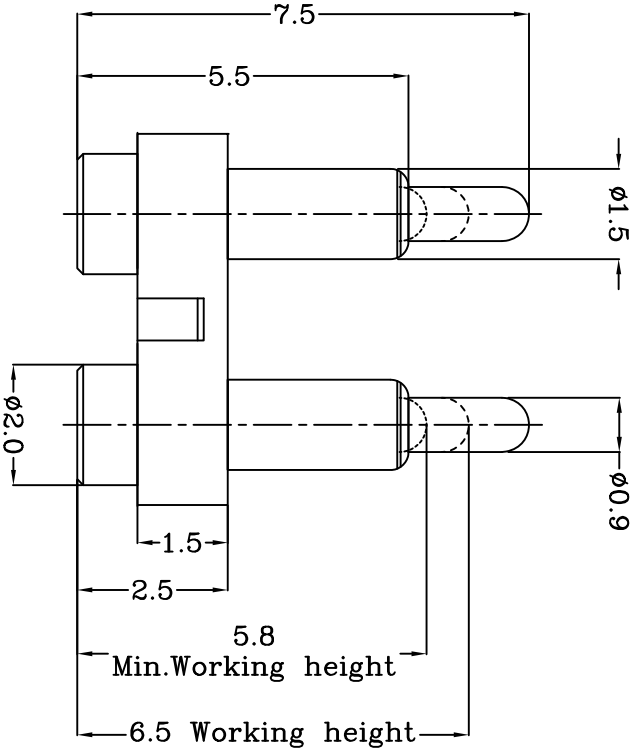


DIST

DIST



Recommended PCB Layout



TOP-LINK

Notes:

- 1 Dimensions shall be interpreted per ASME Y14.5M.
- 2 Mechanical performance(See the table 1)
- 3 Electrical performance
- 4 Packaging specification conforms to EIA 481
- 5 RoHS compliant.

| Item | Part name | Q'ty/Ea' | Material | Finish |
|------|-----------|----------|---|----------------------------------|
| 1 | HSG | 1 | High temp.Plastic UL94 V-0 Color Black | _____ |
| 2 | Body | 2 | Leaded Brass | Gold plating over Nickel plating |
| 3 | Plunger | 2 | Leaded Brass | Gold plating over Nickel plating |
| 4 | Spring | 2 | Stainless steel wire | _____ |
| 5 | | | | |

| Table 1 Mechanical performance | | | |
|--------------------------------|--------|------------|-------|
| working height | 6.50mm | 80gf Min | <2.1> |
| Min.working height | 5.80mm | 165±35gf | |
| Durability | | 10000cycle | |

| | | | | | | | |
|--------------------------------------|--|--------------------|------------------|----------|----|---------|--|
| Top-Link Electronics Ltd. | | Type | Customer drawing | Unit | mm | Weight | |
| TOLERANCES UNLESS OTHER SPECIFIED | | DWN: | Qin Zuozhong | APVD: | | | |
| 0.0 = ±0.15 | | CHK: | | REL: | | | |
| 0.00 = ±0.10 | | Name | | | | | |
| 0.000 = ±0.005 | | Pogo pin connector | | | | | |
| SURF. TEXTURE: | | Scale | | | | | |
| REMOVE BURRS. | | 1:1 | | Size | | DWG No. | |
| BREAK SHARP EDGES | | A4 | | C-100513 | | Page | |
| RO.05 MAX.DO NOT | | | | | | 1/1 | |
| SCALE PRINT. | | | | | | Rev. | |
| | | | | | | A | |

| |
|-------------|
| 100513-2 |
| PART NUMBER |