

## Recommended PCB Layout

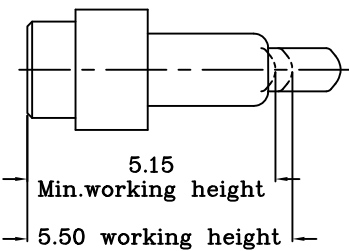
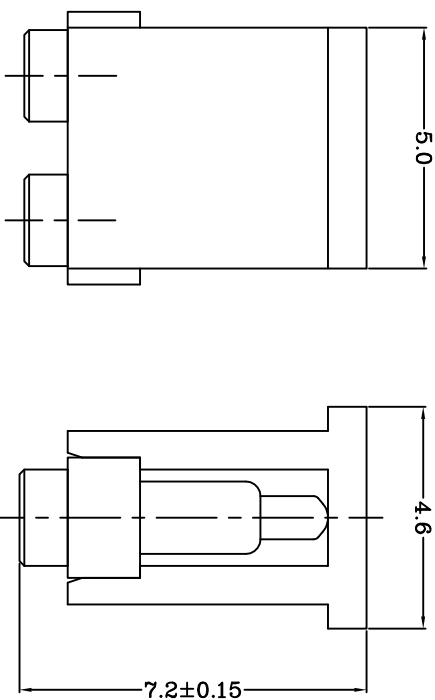


Table 1 Mechanical performance		
working height	5.50mm	125±30gf <2.1>
Durability	10000cycle	

Table 1 Mechanical performance		
working height	5.50mm	125±30gf <2.1>
Durability	10000cycle	

# TOP-LINK



Item	Part name	Q'ty/Ea	Material	Finish
1	HSG	1	High temp. Plastic UL94 V-0 Color Black	_____
2	Body	2	Leaded Brass	Gold plating over Nickel plating
3	Plunger	2	Leaded Brass	Gold plating over Nickel plating
4	Spring	2	Stainless steel wire	_____
5	CAP	1	High temp. Plastic UL94 V-0 Color Black	_____

- 1 Dimensions shall be interpreted per ASME Y14.5M.
- 2 Mechanical performance(See the table 1)
- <2.1>The force is the average of forces obtained when plunger goes downwards and upwards.
- <2.2>Warning: Working height are not permitted to be less than Min working height.
- 3 Electrical performance
- Resistance: 30mOhm Max.
- Current rating: 2.0A
- 4 Packaging specification conforms to EIA 481
- 5 RoHS compliant.

Top-Link Electronics Ltd.	Type	Unit	Weight
	Customer drawing	mm	

TOLERANCES UNLESS OTHER SPECIFIED	DNV: Cai wantu	APVD:	<b>Top-Link Electronics</b>	Top-Link Electronics Ltd
0 $\pm$ 0.15				
0.00 $\pm$ 0.10	CHK:	REL:		

0.000 = 41 -	
Angle: 41 -	
SURF. TEXTURE:	
REMOVE BURRS:	
Name	Pogo pin connector

BREAK 0.05 MAX.D0 SCALE PRINT.	Score 1:1	Size A4	DWG. No. C-100340	Page 1/1	Rev. A1
--------------------------------------	--------------	------------	----------------------	-------------	------------