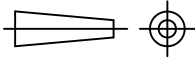
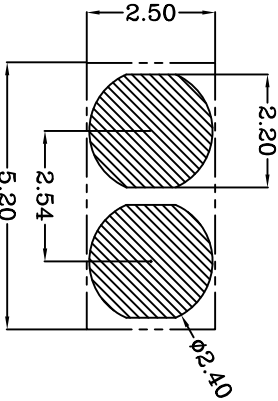
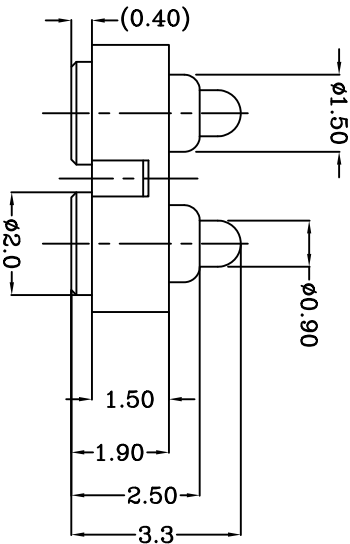
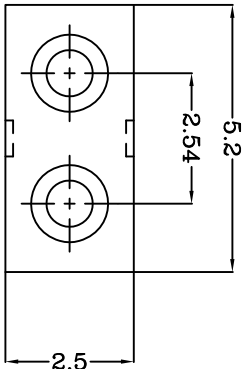


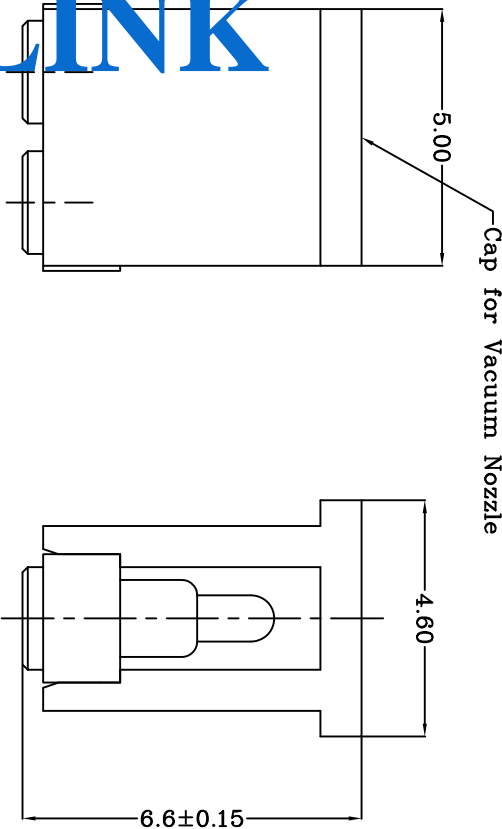
THIS INFORMATION IS CONFIDENTIAL AND IS DISCLOSED TO YOU ON CONDITION THAT NO FURTHER DISCLOSURE IS MADE BY YOU TO OTHER THAN TOP-LINK PERSONNEL WITHOUT WRITTEN AUTHORIZATION FROM TOP-LINK LTD.



DWG NO.
100209



Recommended PCB Layout



TOP-LINK

- Notes:
- 1 Material, Housing: PA 4,6 (30% Glass Filled)
Color Black.
 - 2 Mechanical demands:
Spring force: 90±20 gf with 0.5mm stroke.
Plating Plunger: 0.4µm Au over 1.4µm Ni.
Plating Body: 0.1µm Au over 1.4µm Ni.

Contact: Brass

LDC	-
DIST	-

LTR	NEW	REVISION	APVD	DATE
RECORD				

DIMENSIONS IN MM					TOLERANCES UNLESS OTHER SPECIFIED				
0	= ±	0.0	= ±0.10	0.00	= ±0.10	0.000	= ±	ANGLE: ±1°	SURF TEXTURE: 32/
REMOVE BURRS, BREAK SHARP EDGES R0.05 MAX	DO NOT SCALE PRINT	SCALE	1:1	A4	DWG	NO.	C-100209	SHEET	1 OF 1
NAME	BATTERY	POGO CONNECTOR	2 POSITIONS	PGC-1.5-3.3-R-2P-2.54PH	Top-Link Electronics Ltd.	Part Number	100209-2	Rev	A

4

3

2

1

USED ON

-