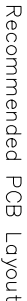


# TOP-LINK

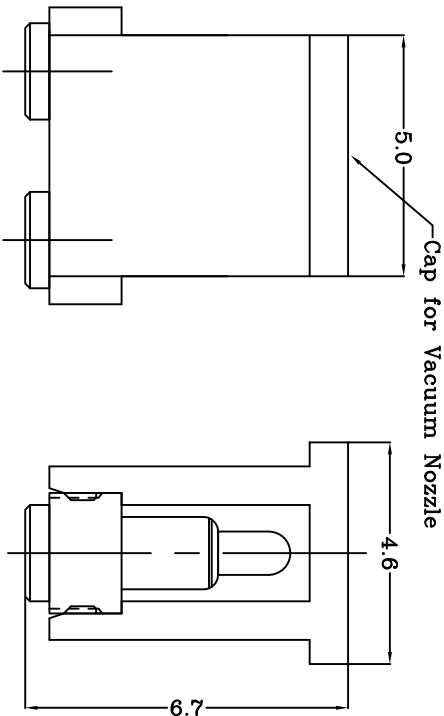


|            |            |
|------------|------------|
| Durability | 10000cycle |
|------------|------------|

4 Packaging Specification conforms to EIA 481  
5 RoHS compliant.

| Table 1 Mechanical performance |            |                |
|--------------------------------|------------|----------------|
| working height                 | 4.50mm     | 120±30gf <2.1> |
| Durability                     | 10000cycle |                |

# TOP-LINK



|  |       |                    |   |      |        |
|--|-------|--------------------|---|------|--------|
| Top-Link Electronics Ltd   | Type  | Customer drawing   | Unit  | mm   | Weight |
| TOLERANCES UNLESS OTHER SPECIFIED  | DWG:  | APVD:              | <div style="text-align: center;"> <b><i>Top-Link</i></b><br/> <b><i>Electronics</i></b> </div> <div style="text-align: right;"> Top-Link<br/>Electronics Ltd </div> |      |        |
| 0.0 = ± 0.15<br>0.00 = ± 0.10<br>0.000 = ± 0.05  | Minos | REL:               |   |      |        |
| Angle: ±1<br>SURF. TEXTURE:<br>REMOVE BURRS.<br>BREAK SHARP EDGES<br>R0.05 MAX.D0 NOT SCALE PRINT. | CHK:  |                    |   |      |        |
|  | Name  | POGO PIN CONNECTOR |   |      |        |
|  | Scale | Size               | DWG No.   | Page | Rev.   |
|  | 1:1   | A4                 | C-1000081   | 1/1  | A      |