

	DWN No.: C-100048
---	----------------------

Technical drawing of a mechanical part, showing a side view with dimensions 7.70 and 4.6.

Item	Part name	Q'ty/Ea	Material	Finish
1	HSG	1	High temp. Plastic UL94 V-0 Color Black	_____
2	Body	2	Leaded Brass	Gold plating over Nickel plating
3	Plunger	2	Leaded Brass	Gold plating over Nickel plating
4	Spring	2	Stainless steel wire	_____
5	CAP	1	High temp. Plastic UL94 V-0 Color Black	_____

Table 1 Mechanical performance		
Working height	6.9mm	110±30gf <2.1>
Durability	10000cycle	

<sup>1</sup> Dimensions shall be interpreted per ASME Y14.5M.

<2.2>Warning: Working height are not permitted to be less than Min working height.

Resistance: 30mOhm Max.

4 Packaging Specification conforms to EIA 481  
5 RoHS compliant.

5 RoHS compliant.

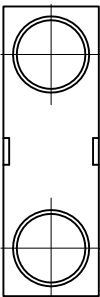
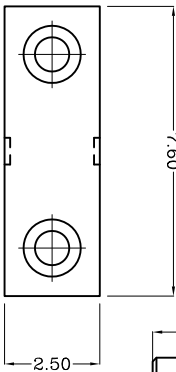
Technical drawing of a mechanical part showing two views: a front view and a side view.

**Front View (Top):**

- Total height: 8.00
- Central section height: 6.00
- Base height: 3.0
- Side view height: 5.08

**Side View (Bottom):**

- Total width: 1.50
- Central section width: 0.90
- Base width: 0.15
- Working height: 6.90



Top-Link Electronics Ltd	Type	Customer drawing	Unit	mm	Weight
TOLERANCES UNLESS OTHER SPECIFIED	DWG:	APVD:	<div style="text-align: center;"> <b><i>Top-Link</i></b>  <b><i>Electronics</i></b> </div> <div style="text-align: right;"> Top-Link Electronics Ltd </div>		
0.0 = ± 0.15	Minos				
0.00 = ± 0.10	CHK:	REL:			
0.000 = ± 0.001	Name Pogo pin connector				
Angle: 45°					
SURF. TEXTURE:					
REMOVE BURRS.					
BREAK SHARP EDGES					
R0.05 MAX.D0 NOT					
SCALE PRINT.	Scale	Size	DWG No.	Page	Rev.
	1:1	A4	C-1000048	1/1	1

4

ω

2

1

[illegible]