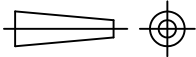
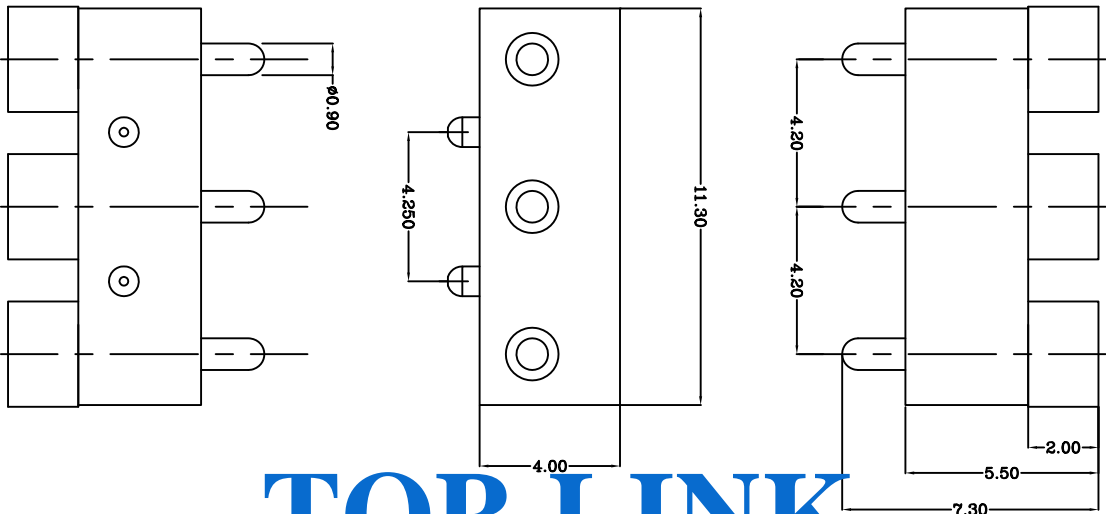
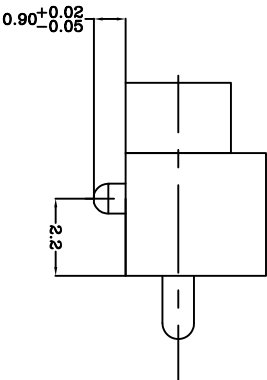


THIS INFORMATION IS CONFIDENTIAL AND IS DISCLOSED TO YOU ON CONDITION THAT NO FURTHER DISCLOSURE IS MADE BY YOU TO OTHER THAN TOP-LINK PERSONNEL WITHOUT WRITTEN AUTHORIZATION FROM TOP-LINK LTD.



DWG NO.
100073-3



TOP-LINK

Notes:
1 Material, Housing: PA 4,6 (30% Glass Filled)
Color Black.
Contact: Brass
2 Mechanical demands:
Plating Plunger: Min 0.4um Au over 1.5um Ni
Plating Body: Min 0.1um Au over 1.4um Ni.

USED ON
-

LDC	-
DIST	-

NEW		2007/09/10
REVISION		
RECORD		
APVD		
DATE		

DIMENSIONS IN MM
TOLERANCES UNLESS
OTHER SPECIFIED
0 = ±
0.0 = ±0.10
0.00 = ±0.10
0.000 = ±0.05
ANGLE: ±1°
SURF TEXTURE: 3.2/
REMOVE BURRS, BREAK
SHARP EDGES R0.05 MAX
DO NOT SCALE PRINT

MATL	HT TR	FIN	PART NUMBER
DWN	APVD		
Benny	Lansing		
CHK	REL		
Andy			
NAME	POGO	PIN CONNECTOR	5 POSITIONS
SCALE	1:1	A4	DWG NO. 100073-3
			PGC-1.68-7.3-RA-3P-4.2PH
			Top-Link Electronics Ltd.
			1 OF 1
			REV A