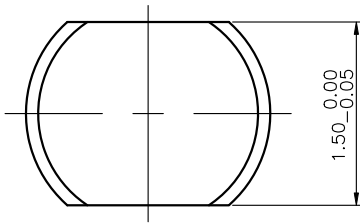
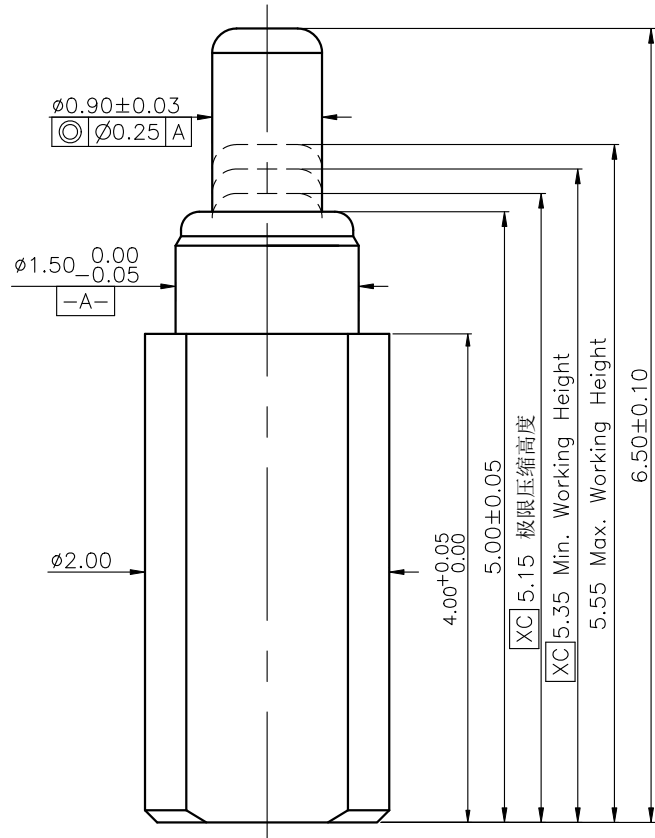


THIS INFORMATION IS CONFIDENTIAL AND IS DISCLOSED TO YOU ON CONDITION THAT NO FURTHER DISCLOSURE IS MADE BY YOU TO OTHER THAN TOP-LINK PERSONNEL WITHOUT WRITTEN AUTHORIZATION FROM TOP-LINK LTD.



拓普联科
TOP-LINK

RECOMMEND PCB LAYOUT(TOP VIEW)
Layout Tolerance: $\pm 0.05\text{mm}$

Notes:

- 1 Dimensions shall be interpreted per ASME Y14.5M
- 2 Mechanical performance(See the table 1)
 - <2.1>The force is the average of forces obtained when plunger goes downwards and upwards
 - <2.2>Warning:Working height are not permitted to be less than Min working height
- 3 Electrical performance
 - <3.1>Current rating: 7.0A
 - <3.2>Voltage rating: 36VAC/DC
 - <3.3>Dynamic Resistance:30mOhm Max (between max and min working height)
 - <3.4>Insulation Resistance:100MOhm minimum
- 4 Environmental performance
 - <4.1> RoHS compliant
 - <4.2>Operating Temperature range: $-40^{\circ}\text{C} \sim +85^{\circ}\text{C}$
 - <4.3>Withstanding High Temperature: $260^{\circ}\text{C}/10\text{Sec}$
- 5 Packaging:Carrier tape

Table 1:Mechanical performance		
Working Height	5.35mm	95 \pm 15gf
Durability	10000 Cycles Min.	

4	Ball	1pcs	Leaded Brass	Au 0.1um min plated over 1.4um min Ni
3	Body	1pcs	Leaded Brass	Au 0.25um min plated over 1.4um min Ni
2	Plunger	1pcs	Leaded Brass	Au 0.75um min plated over 1.4um min Ni
1	Spring	1pcs	Stainless steel wire	-----
Item	Part Name	Q'TY	Material	Finish

Top-Link Electronics Ltd.
TOLERANCES UNLESS OTHER SPECIFIED
0. = \pm -
0.0 = \pm 0.15
0.00 = \pm 0.10
0.000= \pm -
Angle: $\pm 1^{\circ}$
SURF TEXTURE: REMOVE BURRS.
BREAK SHARP EDGES
R0.05 MAX.DO NOT SCALE PRINT.

Type		Customer drawing		Unit		<i>top-link</i>
DRW: Deyu Kong		APRD:		mm		
CHK:		REL:				
Name						
Pogo Pin Connector						
Scale	Size	Part NO.		Page	Rev:	
1:1	A4	10101012734		1/1	XC	

XC	Update	2019.03.12
XB	Update	2019.02.21
Item	Revision record	Date

4

3

2

1