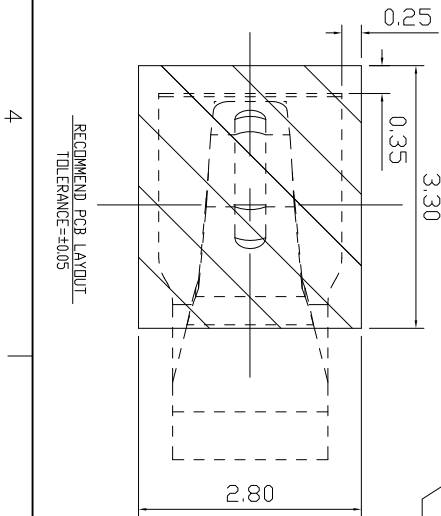


LDC  
-  
DIST  
-



PAD OF PCB.	
A1	Update
A	NEW
LTR	REVISION RECORD
APVD	DATE
2015/11/06	

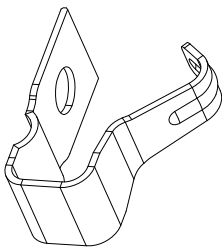
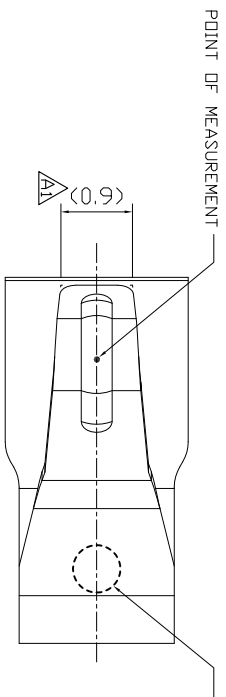
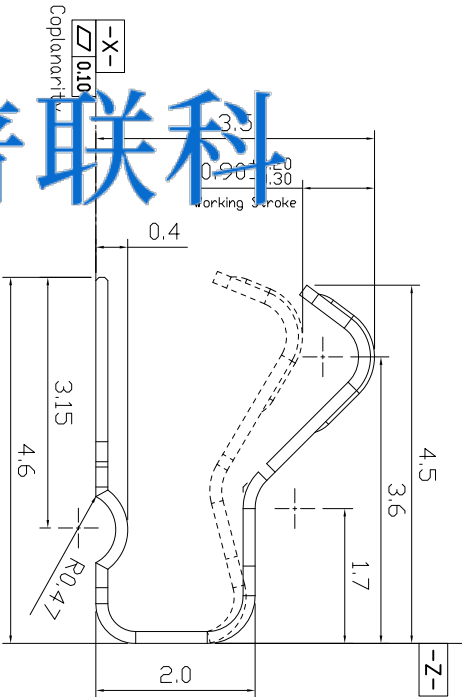
200017-1		2	CARRIER TAPE	P=8mm	WHITE=12mm,Q/Y/REEL=2000 Pcs
1		3.5H 2.3W ANTENNA CLIPS	1Pcs	NOTES 1,2	
ASSEMBLY NUMBER	ITEM	PART NAME	QTY	DESCRIPTION	
DIMENSIONS IN MM TOLERANCES UNLESS OTHER SPECIFIED		MATL	HT TR		FIN
0	= ±-	DWN	APVD		Top-Link Electronics Ltd.
0.0	= ±0.15	Coimontu		Lansing	
0.00	= ±0.10	CHK	REL		
ANGLE:		Kent			
0	= ±3°	NAME			
0.0	= ±1.5°	CUSTOMER DRAWING FOR 3.5H, 2.3W, ANTENNA CLIPS			
REMOVE BURRS, BREAK SHARP EDGES R0.10 MAX		SCALE	DWG	SHEET	REV
DO NOT SCALE PRINT		1:1	A4	1 OF 1	A1

2

1

TOP-LINK

- 3.1 ELECTRICAL CHARACTERISTICS:
- 3.2 MECHANICAL CHARACTERISTICS:
- 3.3 ENVIRONMENTAL CHARACTERISTICS:
- OPERATING TEMPERATURE RANGE : -20°C TO +70°C.
- TAPE & REEL PACKAGING PER EIA481 STANDARD.
- DIMENSION SHALL BE INTERPRETED PER ASME Y14.5M-2009.
- HARMFUL MATERIAL CONTROL FOLLOW "RoHS"
- DURABILITY : MATED 10,000 CYCLES AT WORKING STROKE WITHOUT DEGRADING
- CONTACT NORMAL FORCE: 50gf min PER PIN AT WORKING STROKE



USED ON